



GAT MONTHLY MEMBERSHIP PROGRESS REPORT

Results as of: 4/30/2024

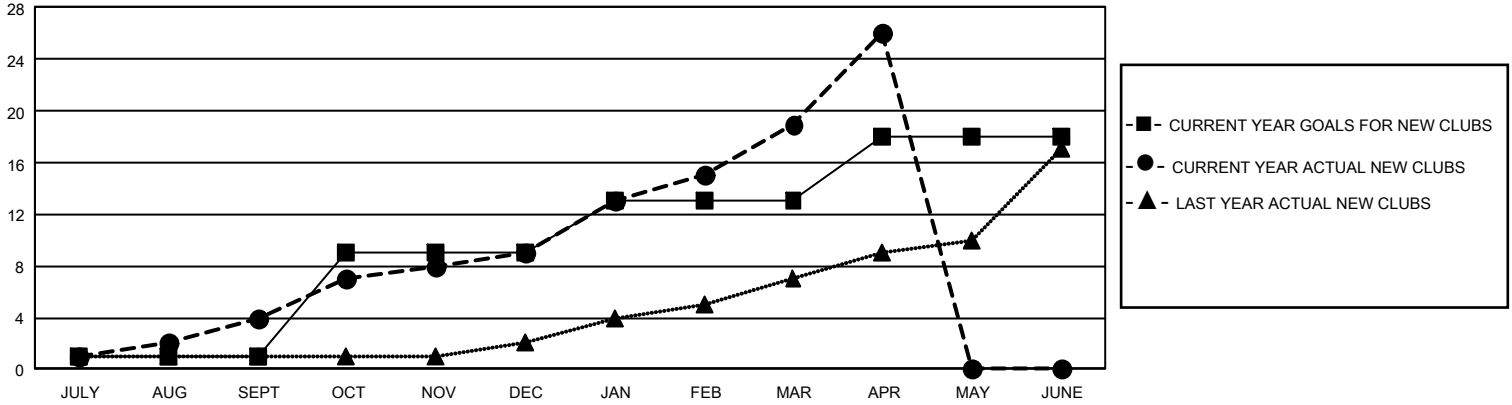
GMT Constitutional Area 4, Group I

REPORT DOES NOT INCLUDE CLUBS IN UNDISTRICTED AREAS.

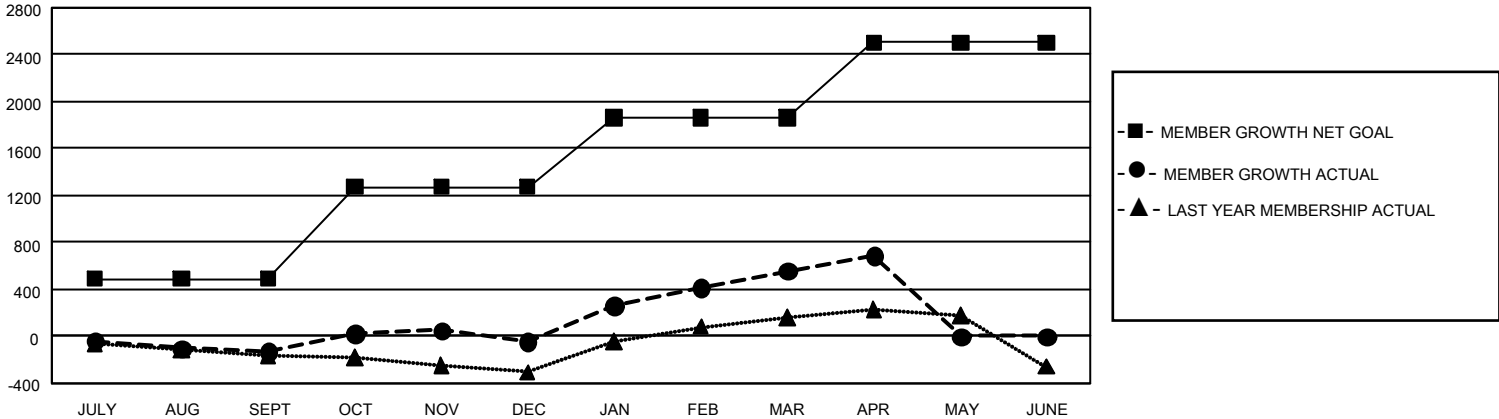
Clubs			
RESULTS FOR 2023-2024			
QUARTER	NEW CLUB GOAL	NEW CLUBS	DROPPED CLUBS
JULY/AUG/SEPT	3	4	9
OCT/NOV/DEC	24	5	4
JAN/FEB/MAR	12	10	0
APR/MAY/JUNE	15	7	0

Members			
RESULTS FOR 2023-2024			
QUARTER	MEMBER GROWTH NET GOAL	MEMBER GROWTH ACTUAL	DROPPED MEMBERS ACTUAL (including transfers)
JULY/AUG/SEPT	490	845	864
OCT/NOV/DEC	784	1,147	965
JAN/FEB/MAR	590	1,302	628
APR/MAY/JUNE	640	388	232

GOALS AND ACTUAL NEW CLUBS CUMULATIVE



GOALS AND ACTUAL MEMBERS CUMULATIVE



DROPPED CLUBS: 13	929 CLUBS OF 1,403 ADDED 1 OR MORE NEW MEMBERS	<u>GENDER DISTRIBUTION</u>	
		MALE 27,320 (69.06%) FEMALE 12,233 (30.92%) NON BINARY 0 (0.00%) PREFER NOT TO ANSWER 4 (0.01%)	
<u>DROPPED MEMBERS</u>		CLICK HERE FOR CUMULATIVE MEMBERSHIP DATA	TOTAL FAMILY UNIT MEMBERS 2,604
DECEASED 309 CLUB CANCELLED 11 OTHER 2,371 TOTAL 2,691			FAMILY MEMBERS PAYING HALF DUES 1,345